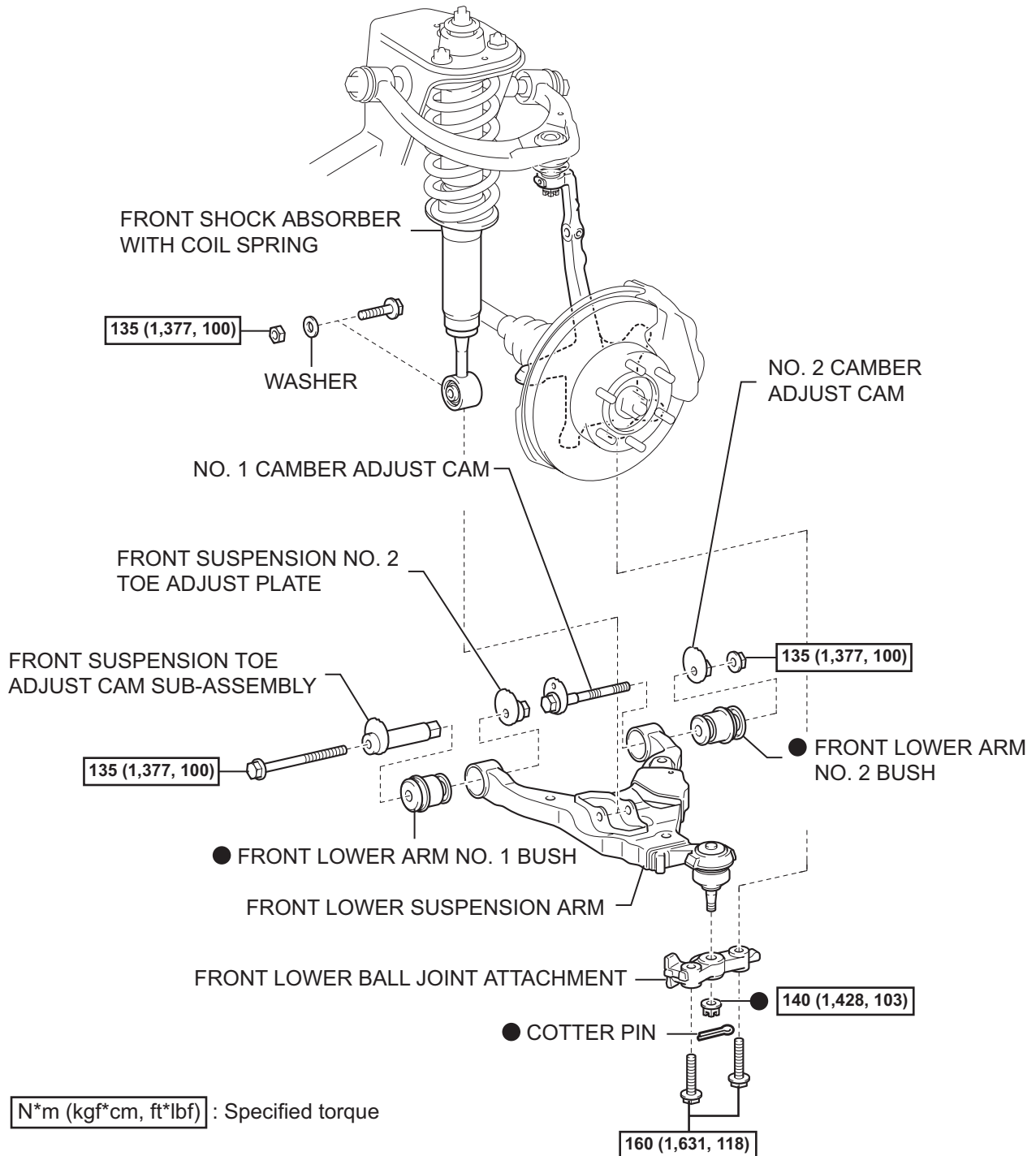


FRONT LOWER SUSPENSION ARM

COMPONENTS



REMOVAL

1. REMOVE FRONT WHEEL

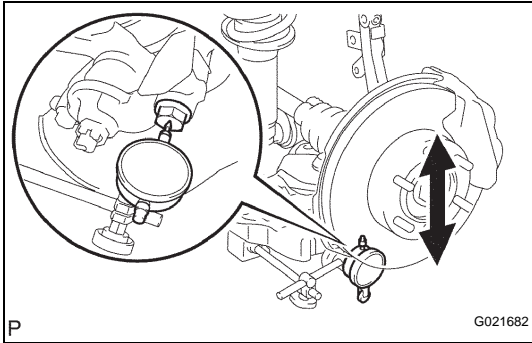
2. INSPECT FRONT LOWER SUSPENSION ARM

- Install the hub nuts onto the disc.
- Using a dial indicator, check the lower ball joint for excessive play when you push the hub nuts up and down with a force of 294 N (30 kgf, 66 lbf).

Maximum:

0.5 mm (0.020 in.)

If it is not within the specification, replace the lower arm.

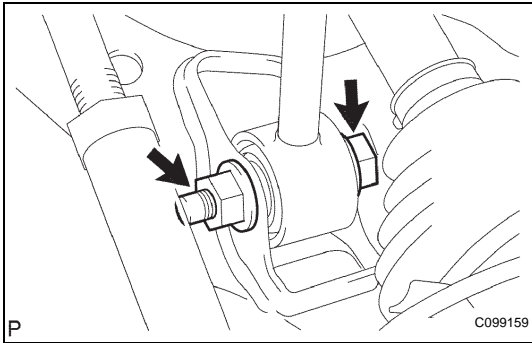


P

G021682

3. SEPARATE FRONT SHOCK ABSORBER WITH COIL SPRING

- Remove the bolt, nut and washer.
- Separate the front shock absorber with coil spring from the lower arm.

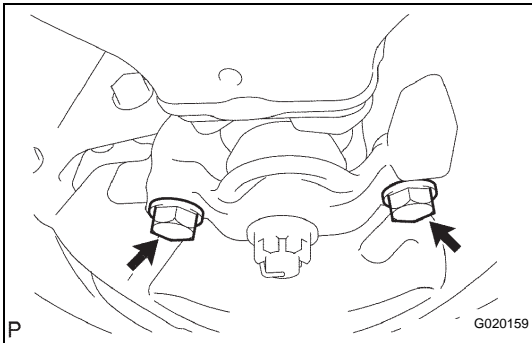


P

C099159

4. REMOVE FRONT LOWER SUSPENSION ARM

- Remove the 2 bolts and separate the lower ball joint attachment from the steering knuckle.

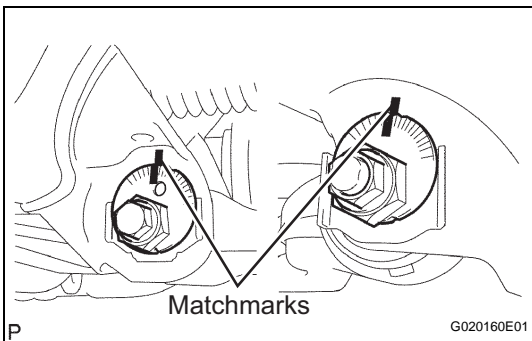


P

G020159

- Place matchmarks on the No. 2 camber adjust cam and toe adjust cam.

- Remove the nut, No. 2 camber adjust cam, No. 1 camber adjust cam, bolt, toe adjust cam, toe adjust plate and lower arm.



P

G020160E01